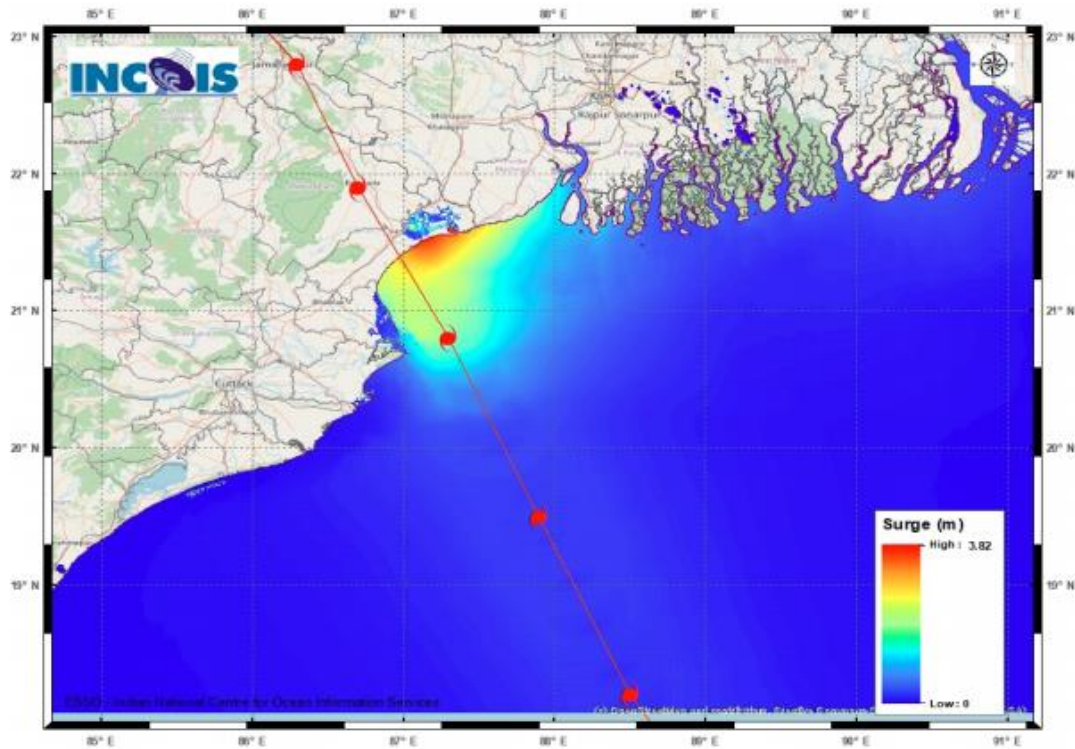


## **STORM SURGE GUIDANCE BASED ON 0600 UTC OF 24th MAY**

Tidal waves of height 2-4 meters above astronomical tide are likely to inundate low lying coastal areas of Jhargram, south 24 Parganas, Medinipur, Balasore, Bhadrak, Kendrapara & Jagatsighpur Districts around the time of landfall.

Strom Surge Bulletin from INCOIS



### **STORM SURGE HEIGHT INFORMATION:**

\* The below listed surge heights are over and above astronomical tide.

MANDAL/TALUK	DISTRICT	STATE / UNION TERRITORY	NEAREST PLACE OF HABITATION	STORM SURGE (m) *	EXPECTED INUNDATION EXTENT (km)
Baleswar	Baleswar	Odisha	Kumbhigari	2.1-3.8	Upto 2.33
Basirhat	North 24 Parganas	West Bengal	Amlamethi	0.5-0.9	Upto 0.37
Bhadrak	Bhadrak	Odisha	Mohanpur	0.9-2.1	Upto 7.02
Diamond Harbour	South 24 Parganas	West Bengal	Pashchim Bhabanipur	0.5-1.1	Upto 0.78
Kanathi	Purba Medinipur	West Bengal	Safar Chata	0.5-2.9	Upto 1.50
Kendraparha	Kendrapara	Odisha	Tikayat Nagar	0.5-1.5	Upto 2.64
Tamluk	Purba Medinipur	West Bengal	Jamitta	0.5-1.3	Upto 0.42
Uluberiya	Haora	West Bengal	Orphuli	0.5-0.8	Upto 0.44